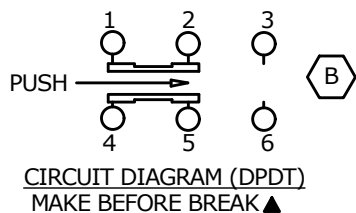


SWITCH FUNCTION	
POS. 1	POS. 2
ON	ON
2-1, 5-4	2-3, 5-6

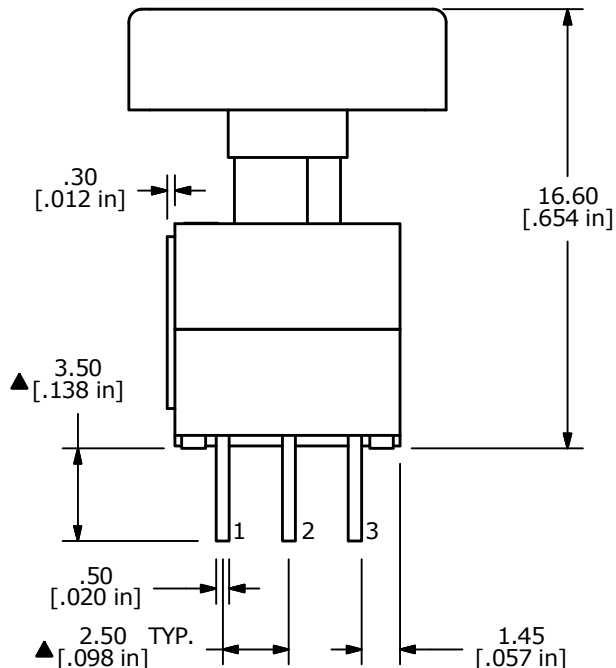
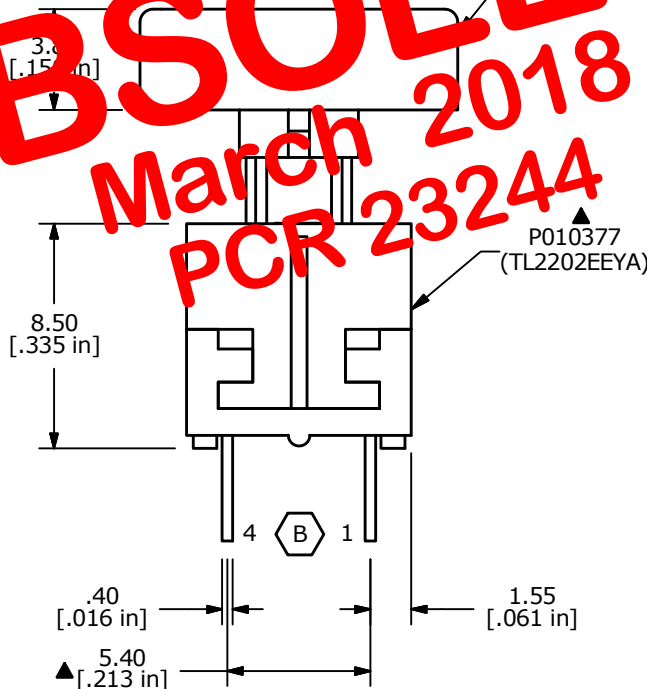
(ON)=MOMENTARY

**OBSOLETE**  
 March 2018  
 PCR 23244



NOTES:

1. ALL DIMENSIONS IN MM [INCH]
2. GENERAL TOLERANCE: X.X=± 0.4  
X.XX=± 0.25
3. TERMINAL NUMBERS FOR REF. ONLY
- ▲ 4. RATING: 0.1A @ 30VDC
5. TRAVEL: 2.50± 0.38mm
6. OPERATING FORCE: 220± 50gf
7. ELECTRICAL LIFE: 10,000 CYCLES
8. ▲ DENOTES CRITICAL PARAMETER
9. 2002/95/EC (ROHS) COMPLIANT



B	19719	DRAWING CLEAN-UP / UPDATE	2/25/11	BGL
A	17655	RELEASED FOR PRODUCTION	10/1/07	BF
REV	PCR NO	DESCRIPTION	DATE	BY

TITLE TL2202EEYA4JBLK				
SCALE	DATE	DR	DWG	REV
2:1	10/1/2007	BF	XP0304A	B

THE INFORMATION CONTAINED IN THIS DOCUMENT IS PROPRIETARY TO E-SWITCH AND IS NOT TO BE COPIED OR TRANSFERRED